



NONWOVEN CROP COVER
CLIMATE MANAGEMENT & INSECT CONTROL

PROTECT YOUR CROPS



AgriFabric™ **Extra Heavy Blankets** are protective covers to insulate your plants from the cold. Creating a controlled environment and raising air & soil temperatures by trapping daytime heat to be released during the night and reducing wind damage.



AgriFabric™ **Lightweight Blankets** Protects Crops from pests by creating a barrier to the plant leaf and eliminating the need for pesticide applications.



AgriFabric™ Blankets allow sunlight, air and water through the fabric yet strong and durable for overwintering. Increasing the relative humidity and CO₂, reducing water loss, boosting moisture and reduced soil crusting



INCREASE YOUR YIELD

Our Fabric Line Covers Your Needs

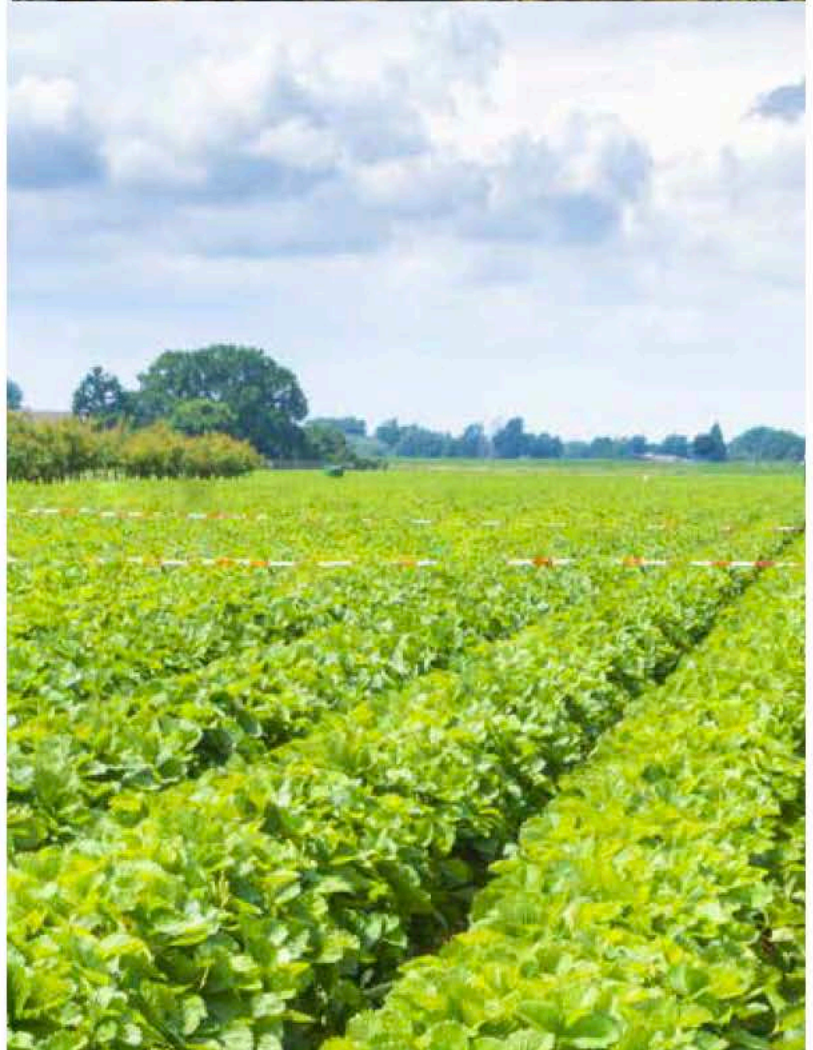
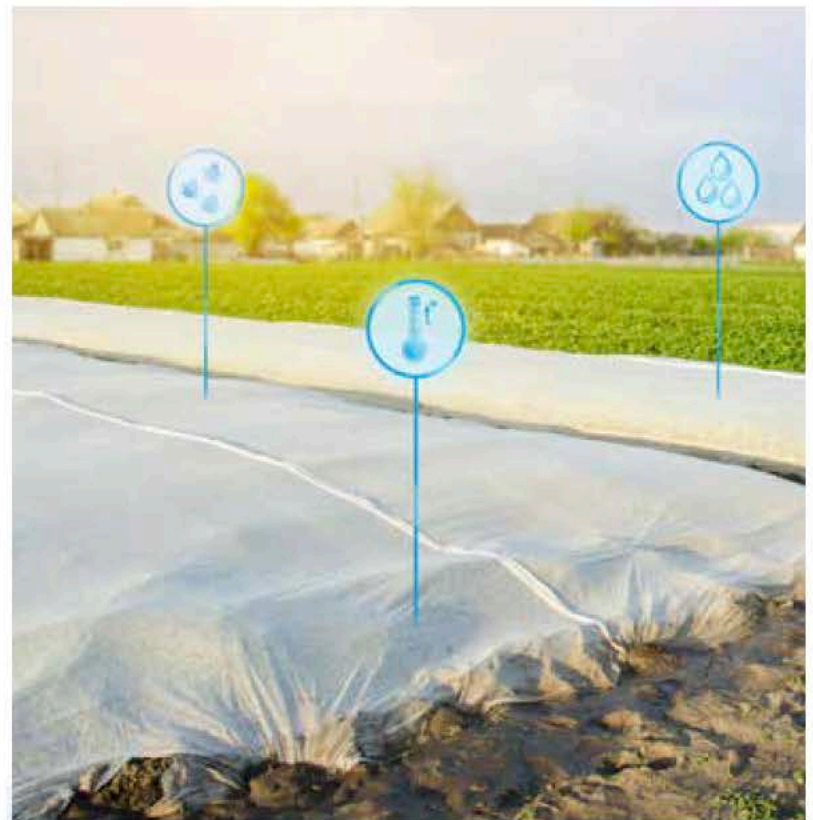
LIGHT WEIGHTS Suitable for most crops. While offering minimal protection from the elements these AgriFabric™ covers are mostly for insect protection.

Because of the light weight they won't retain much heat however they don't need support and can be laid directly on plants.

MEDIUM WEIGHTS Our most common AgriFabric™ cover **suitable for most crops** and are perfect for crops needing to mature and increase yield. These covers will retain some heat and used mainly during the Spring and Fall. The most suitable plants for medium weight covers are lettuce, peas, carrots, potatoes, radishes, strawberry & blueberries to name a few.

HEAVY WEIGHTS Perfect for the cold seasons as the winter blankets provide shelter against frost and freeze. AgriFabric™ covers are excellent for early and late season extension for cool season crops such as pepper and tomatoes.

Winter Blankets, due to their thickness, reduce permeability and sunlight. These covers are mainly meant to be used on specific plants that thrive under such conditions. **Long lasting and reusable.**



EASY TO USE & REUSE



WINTER FREEZE PLAN AHEAD

Don't wait until the Winter Freeze as each roll of our covers are custom made to width and length.



SPRING PLANTING PLAN AHEAD

Don't wait until the Spring planting to protect from insects. Let us know your sizes and we'll organize our production schedule around your needs.

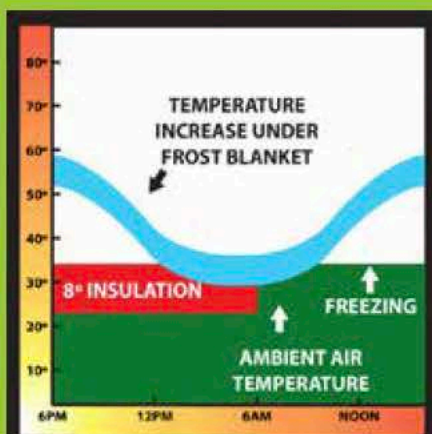
*Custom sizes seamed in increments of 5' up to 50' wide.



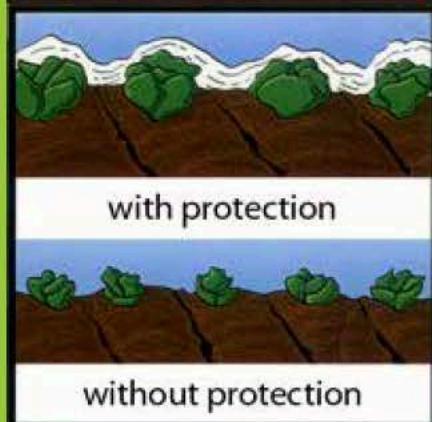
WITH AGRIFABRIC™



WITHOUT AGRIFABRIC™



FROST: (fall-winter) AgriFabric™ Blankets establish a microclimate by capturing extra heat during the day - and then slowing the loss of stored heat at night. It is porous to air, water and nutrients.



SEED STARTER: (spring - summer) AgriFabric™ Blankets help increase air and soil temperatures, increase relative humidity and CO₂ and protects seed and new plants from insects and birds; creating bigger plants and vegetables.

EXTRA HEAVY

Frost Protection:
+8°-10°F

Extra Heavy Blanket for
Freeze Protection and
Overwintering
Multiseason Use

AFX
TRANSMITS UP TO
30% Light

HEAVY

Frost Protection:
+6° to 8°F

HEAVYWEIGHT
Blanket for
Frost Protection
and Overwintering
Fruits & Ornamentals

AF 200
TRANSMITS UP TO
30% Light

AF 150
TRANSMITS UP TO
50% Light

MEDIUM

Frost Protection:
+4° to 6°F

MEDIUM WEIGHT Blanket
Frost Protection
and Overwintering
Perennials
Improve Yield

AF 125
TRANSMITS UP TO
60% Light

AF 100
TRANSMITS UP TO
70% Light

LIGHT

Frost Protection:
+2° to 4°

LIGHTWEIGHT Blanket
Frost Protection
Wind Break
Insect Protection
(Eliminates Need For Pesticides)
Improve Yield
(Early Germination Blanket)
Early / Late Market

AF 75
TRANSMITS UP TO
85% Light

AF 50
TRANSMITS UP TO
90% Light

SAMPLES



**Multi-season use depends on amount of UV exposure as well as the amount of wind and elements exposed to.*